



Model No.: RESK-01

Warning!

To avoid the risk of property damage, serious injury or death:

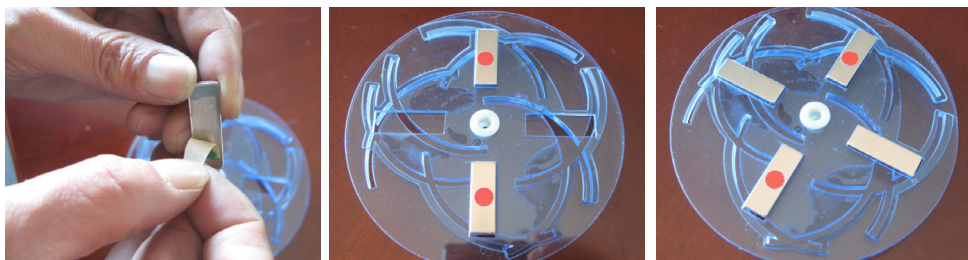
This kit should only be used by persons 12 years old and up, and only under the supervision of adults who have familiarized themselves with the safety measures described in the kit. Keep small children and animals away, as it contains small parts that could be swallowed. Read the instructions before use and have them ready for reference.

List of components:

1. 4 magnets
2. 4 blades
3. 1 LED base
4. Lower blade plate
5. Upper blade plate
6. Red and black wire
7. 1 aluminum stator
8. 1 aluminum rotor
9. Blade plate lock
10. 1 coil winding base



Assembly Guide



1. Stick all 4 magnets into their housing at the bottom of the lower blade plate; one magnet per housing only. Please note that the magnets' red mark should be visible.

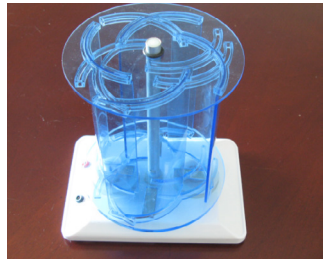
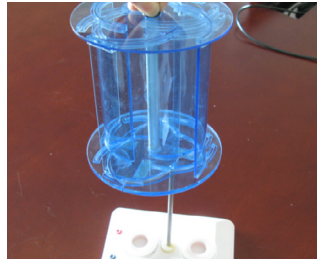
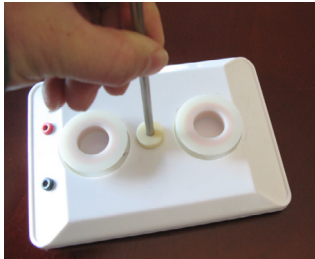


2. Insert the aluminium rotor into the lower blade plate. The rotor can be configured in sets of two to four blades. Use colored markings on the lower and upper blade plate to ensure the blades are in the right positions for each configuration.

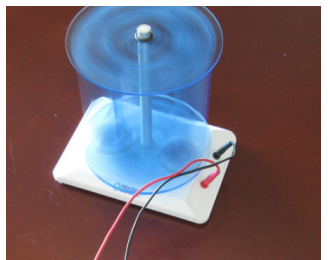
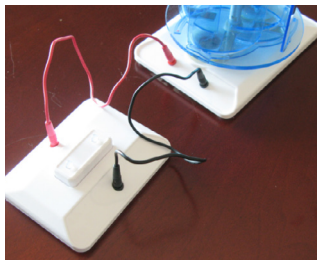
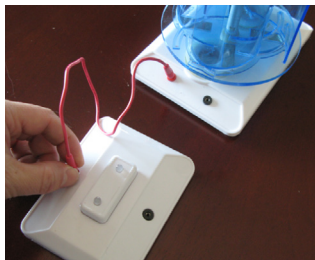


3. Insert the blades into the upper blade plate, and use the blade plate lock to secure it.

Assembly Guide



- 4.** Insert the aluminum stator into the wire coil base, and then lower the assembled rotor onto the stator.
-



- 5.** Connect the LED base to the wire coil base using the red and black cables. Once the wind pitch is exposed to wind, it will start generating electricity which will power the connected LED base.

Safety

Before you perform experiments with the turbine, please note that the rotor can spin at a few thousand RPM (Revolutions per Minute), especially if no load is connected or the turbine is set to high power. Wear goggles and keep your hands and face clear of the spinning turbine to avoid injury.

Be sure to install the turbine properly so that it will not move or topple over while running. Placing a rubber mat, foam padding, or a thin book under the base helps stabilize the turbine if the underlying surface is too smooth. Placing adhesive tape on the Base Extender also helps secure the turbine to a solid surface.

If the turbine falls over while running, do not try to catch it. Extending the Base Extenders will increase the footprint of the base and reduce the chance of it toppling over. Please note that one of the Base Extenders must be aligned in the prevailing wind direction to effectively prevent it from toppling over.

Be sure to operate the turbine in an area where there is enough space to perform experiments. Adult supervision is required. This wind turbine is not suitable for children under 12 years old.

MANUFACTURER

HORIZON P.R. CHINA
Block 19, No.2 Suide Rd.
200331, Shanghai, P.R. China

IMPORTER

NORTH AMERICA HQ / CHICAGO
Horizon Fuel Cell Americas Inc
18 S. Michigan Avenue, 12th floor
IL 60603 Chicago

EUROPEAN HQ / PRAGUE
Narodni 416/37
110 00 Prague, Czech Republic